

# Hitema SWC 070-PCC

## Specifications

Brand	Hitema
Type	SWC 070-PCC
Product type	Water Cooled Chiller
Capacité kW	74
Réfrigérant	Freon
Refrigerant Type	R410A
Weight	740 kg shipping weight / 1160 kg operating weight
Sizes	2220x1011x1990
Compressor(s) type & model	ZP120KCE - ZP154KQE
Remarks	YOB 2016
Remarks	13.2 m3/h
Remarks	390 dm3
More info?	see pdf
Stock	1



## Description

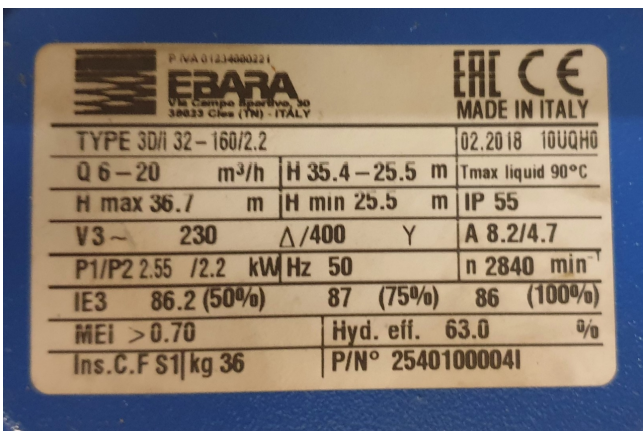
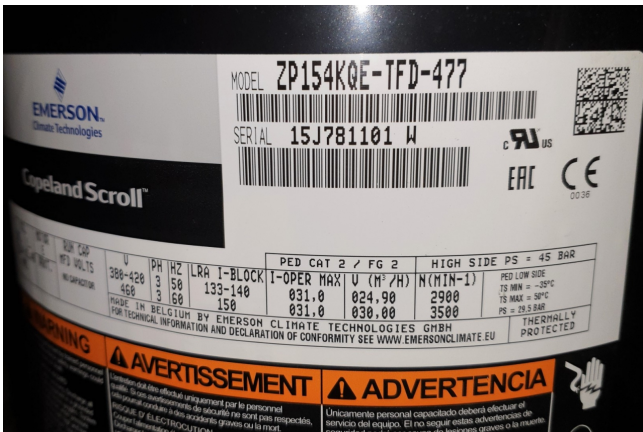
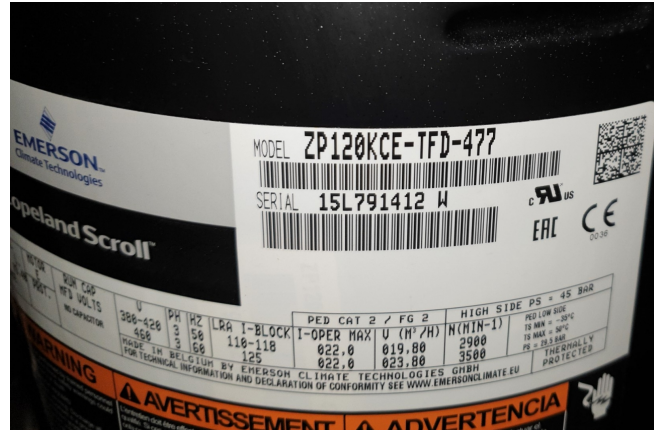
### Used Hitema SWC 070-PCC

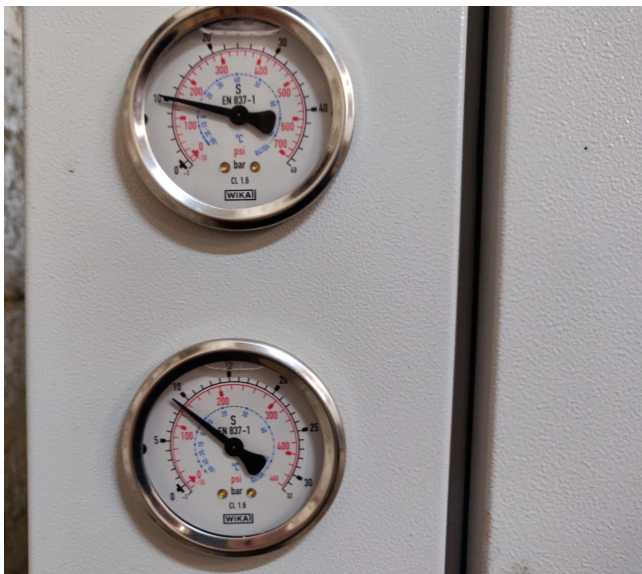
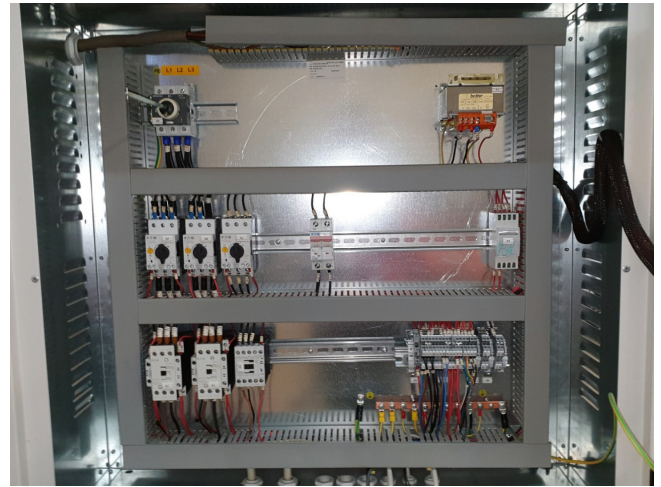
Used 2016 Water cooled chiller with plat/shell & tube condensor and coaxial evaporator, build in 2016 by Hitema type SWC 070-PCC. This chiller has 74kW cooling capacity. ZP120KCE - ZP154KQE \*All components of this used chiller will be tested on good working, leak free condition (condensing blocks), compressors, fans, control panel, etcetera). Choosing HOSBV means buying with warranty. We perform a industrial cleaning and rust spots will be covered. Also, we can arrange your shipment.



cool with  
**HITEMA**    
 international  
Via Vene. G. Babilin 14 - Z.I. S. Gabriele  
 35024 BIVOLENTA - PADOVA - ITALY  
 TEL. +39 049 5386344 - FAX +39 049 5386300  
 E-mail: info@hitema.it Web site: www.hitema.com

MODELLO MODEL	MODÈLLE MODELL	SWC 070/PLC	
MATRICOLA SERIAL NO.	MATRICULE SERIEN N.	C02BP1017	
ANNO COSTRUZIONE MANUFACT. YEAR	ANNÉE DE FABRICATION BAUJAHR	02/2016	
PRESS. MAX. LATO FREON Max PRESS FREON SIDE	PRESS. MAX. CÔTÉ FREON MAX. DRUCK WASSER SEITE	PS HIGH SIDE	PS LOW SIDE
		42 bar	30 bar
TEMP. MIN./MASSIMA MIN./MAX. TEMP. FREON SID	TEMP. MIN./MAX. CÔTÉ FREO MIN./MAX. TEMP. FREON SEIT	TS HIGH SIDE	TS LOW SIDE
		-25 / +90 °C	-25 / +50 °C
PRESS. MAX. LATO ACQUA MAX PRESS WATER SIDE	PRESS. MAX. CÔTÉ EAU MAX. DRUCK WASSER SEITE	PIPING	TANK
		6 bar	3 bar
REFRIGERANTE REFRIGERANT	REFRIGÉRANT KÄLTEMITTEL	R410A	9,0 Kg
TENSIONE/TENS. AUSILIARI EL. SUPPLY/AUX. SUPPLY	TENSION/TENSION AUX SPANNUNG/STEUER. SPANN.	400V/50Hz/3~/PE±5% 24V/50Hz/1~/PE±5%	
ASSORBIMENTO MAX AMPS	ABSORPTION STROMAUFNAHME	48,2 A	
PESO A VUOTO/OPERATIVO SHIPPING/OPERATING WEIGHT	POIDS GEWICHT	740 / 1160 Kg	





## HITEMA

Watercooled liquid chillers SWC series, scroll compressors R410A, coaxial evaporator, plate/shell&tube condenser

Model	SWC 030	038	045	051	061	070	075	085	095	
NOMINAL COOLING CAPACITY (1)	kW 31.5	40.4	46.2	53	61.4	74	80	92	96	
REFRIGERANT	R410A	R410A	R410A	R410A	R410A	R410A	R410A	R410A	R410A	
NOMINAL COOLING CAPACITY (1)	Fluor. 27090	34744	39732	45580	52804	64478	69800	79120	82660	
TOTAL COMPRESSORS NOMINAL ABSORBED POWER (1)	kW 8.2	10.5	12.1	14.4	16.9	19.4	20.9	24.0	25.0	
COEFF. OF PERFORMANCE (COP)	W/W 3.85	3.86	3.83	3.73	3.63	3.81	3.82	3.69	3.81	
REFRIGERANT	REFRIG. 6.04	5.8	5.75	4.71	5.82	5.73	5.85	5.75	5.88	
REFRIGERANT	REFRIG. 6.35	6.13	6.04	4.96	6.12	6.12	6.13	6.04	6.11	
COMPRESSORS	no. 1	1	1	1	2	2	2	2	2	
SCROLLS	no. 1	1	1	1	1	1	1	1	1	
PARTITION STEP	no. 1	1	1	1	1/1	1/1	1/1	1/1	1/1	
<b>HYDRAULIC SECTION</b>										
NOMINAL WATER FLOW	m <sup>3</sup> /h 5.4	6.9	7.9	8.0	10.6	13.2	13.9	16.0	16.5	
EVAPORATOR PRESSURE DROP	kPa 31	32	32	33	34	33	32	38	39	
AVAILABLE PRESSURE	m <sup>3</sup> /h 30	30	28	30	30	31	29	27	27	
PUMP ABSORBED POWER	kW 1.28	1.28	1.23	2.57	2.56	2.56	2.7	3.5	3.5	
PUMP ABSORBED CURRENT	A 2.4	2.4	2.2	4.6	4.6	4.6	4.6	6.1	6.1	
HYDRAULIC CONNECTIONS	BSPDN 1.1/2"	1.1/2"	1.1/2"	2"	2"	2"	2"	2"	2"	
TANK VOLUME	dm <sup>3</sup> 270	270	270	270	390	390	390	390	390	
<b>CONDENSING SECTION</b>										
TYPE OF CONDENSER - INCLUDED CONDENSING CONTROL		PLATE					SHELL&TUBE			
TOTAL CONDENSER FLOW (2)	m <sup>3</sup> /h 6.8	8.7	10	12	13.3	16	17	20	20.8	
CONDENSER PRESSURE DROP (2)	kPa 80	80	80	85	85	87	86	109	97	
HYDRAULIC CONNECTIONS	BSPDN 1.1/2"	1.1/2"	1.1/2"	2"	2"	2"	2"	2"	2"	
<b>TOTAL ELECTRIC DATA</b>										
NOMINAL ABSORBED POWER	kW 9.3	12.8	14.4	18.9	18.6	21.96	23.6	27.7	28.5	
MAXIMUM ABSORBED CURRENT (S.D.A.)	A 20.0	28.8	32.8	47.8	48.0	67.0	68.0	78.9	79.9	
MAXIMUM PEAK CURRENT (S.D.A.)	A 130	145	175	200	190	137	145	175	180	
ELECTRIC FEED	V/Ph/Hz	400/3/50								
<b>NOISE DATA</b>										
SOUND PRESSURE (3)	dBS(A)	49.0	52.5	53.0	53.0	52.0	54.0	55.5	56.0	
<b>DIMENSIONS AND WEIGHT</b>										
LENGTH	mm	1810	1810	1810	1810	2200	2200	2200	2200	
WIDTH	mm	860	860	860	860	1011	1011	1011	1011	
HEIGHT	mm	1540	1540	1540	1540	1900	1900	1900	1900	
WEIGHT EMPTY	kg	390	400	430	450	710	785	800	815	
WEIGHT OPERATING	kg	690	700	730	750	1105	1200	1210	1200	

The manufacturer reserves the right to modify specifications without notice.